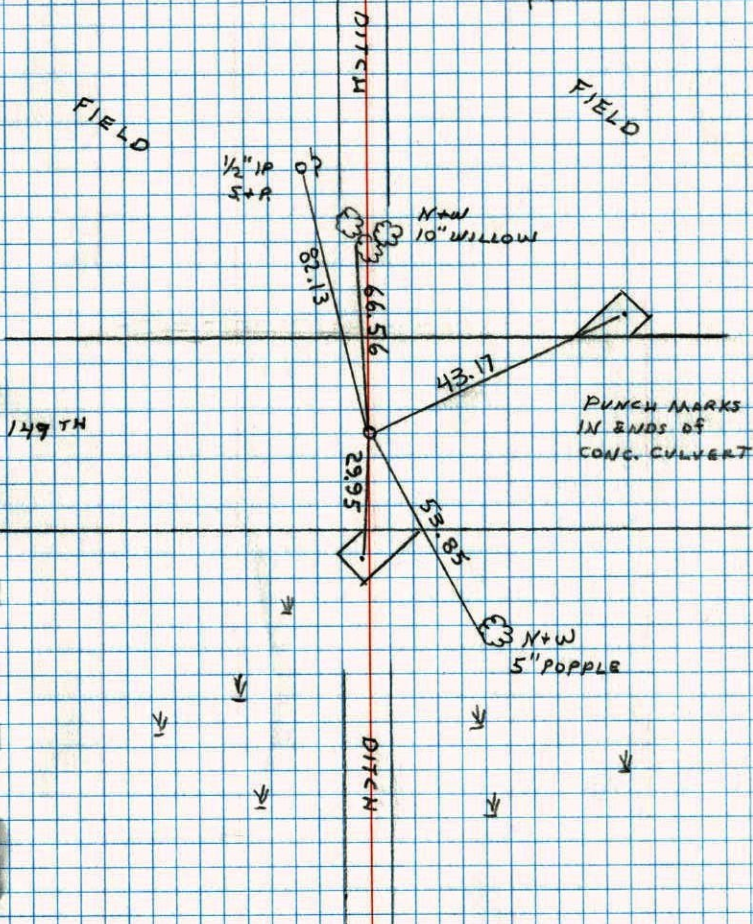


NW CORNER SECTION 28 T32 R23

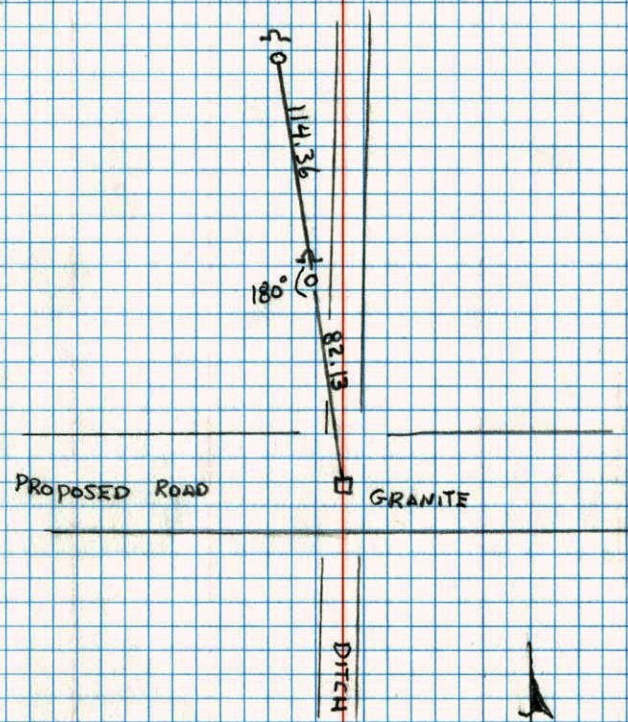
RESET CAST IRON AFTER CONSTRUCTION C.I. FLUSH

PK: 2.00' NORTH ANDERST.

6-8-90
H. LARSON
B. GUETZKOSET 6-8-90
HL

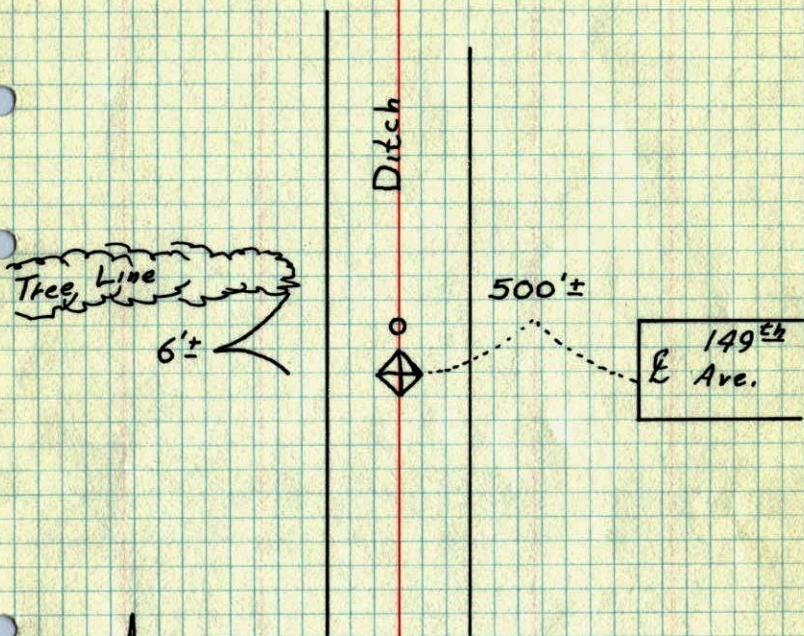
N.W. COR. SECTION 28 T32 R23

SET 1/2" IPS SIGM AND POSTS BY IPS

H. LARSON
B. GUETZKO
J. STEVENSON
5-4-90

N.W. Cor. Sec 28 - T32 - R23

In Place 6x6" Granite Placed Red And White
Iron Pipe On North Side Up 4'±



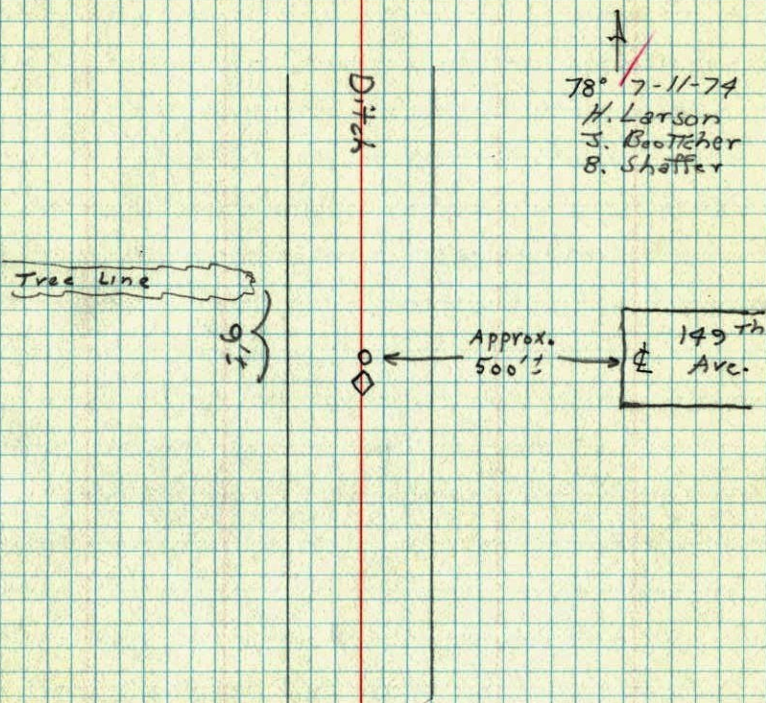
4
7-11-1974
H. Larson
J. Boettcher
B. Schaffer
Temp. 78°
Tape # 14

ROLAND W. ANDERSON
COUNTY SURVEYOR
ANOKA COUNTY, MINNESOTA

**TEMPERATURE CORRECTED
AND HORIZONTALLY
TAPED MEASUREMENTS**

NW Cor. Sec. 28 T32 R23

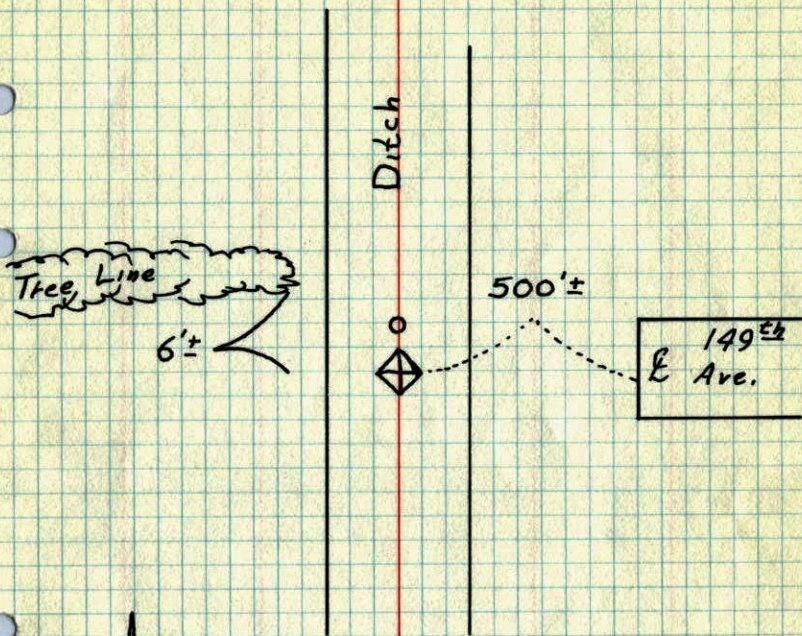
(In Place)
~~Found~~ 6x6 Granite placed red and
white iron pipe on north side up 4'±



↑
78° 7-11-74
H. Larson
J. Boettcher
B. Schaffer

N.W. Cor. Sec 28 - T32 - R23

In Place 6x6" Granite Placed Red And White
Iron Pipe On North Side Up 4'±



4

7-11-1974

H. Larson

J. Boattcher

B. Schaffer

Temp. 78°

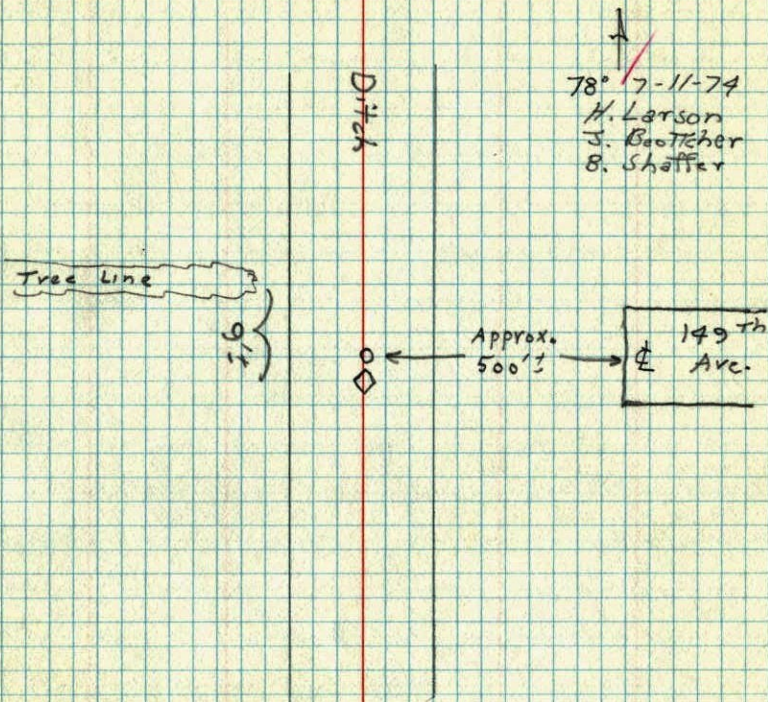
Tape # 14

ROLAND W. ANDERSON
COUNTY SURVEYOR
ANOKA COUNTY, MINNESOTA

**TEMPERATURE CORRECTED
AND HORIZONTALLY
TAPED MEASUREMENTS**

NW Cor. Sec 28 T32 R23

(In Place)
~~Found~~ 6x6 Granite placed red and
white iron pipe on north side up 4'±



78° 7-11-74

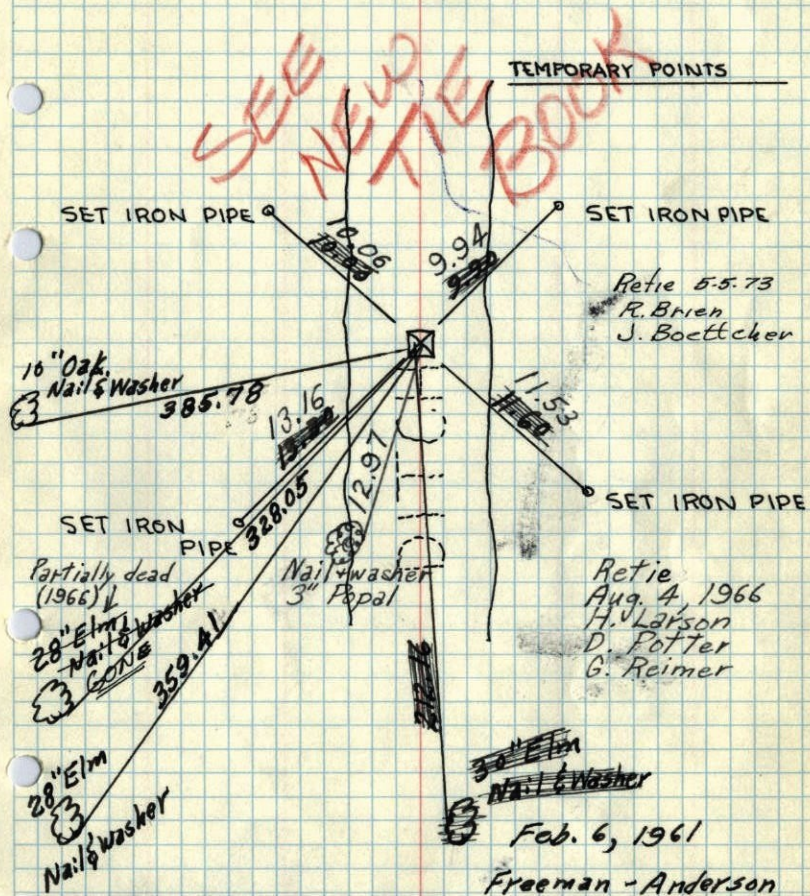
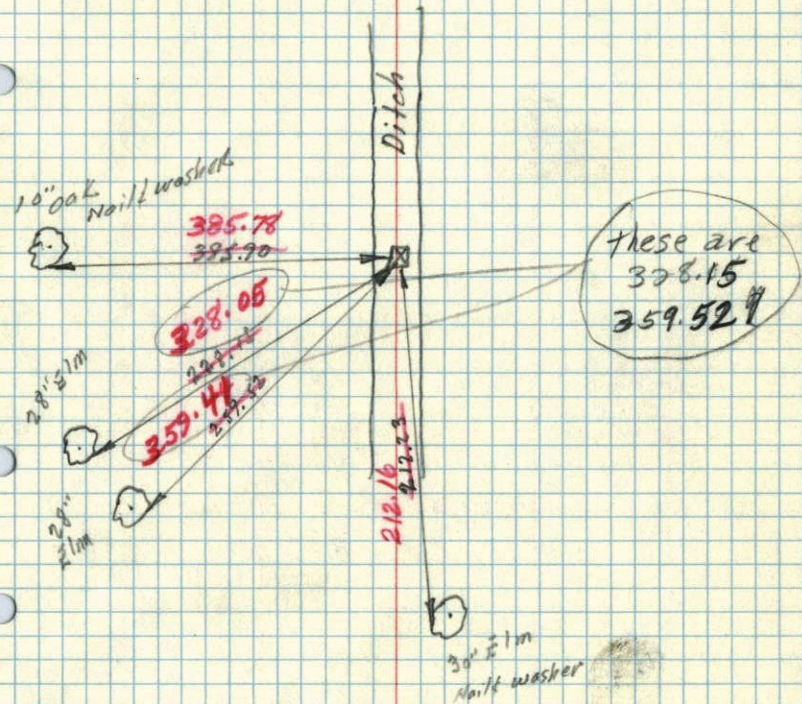
H. Larson

J. Boattcher

B. Schaffer

97

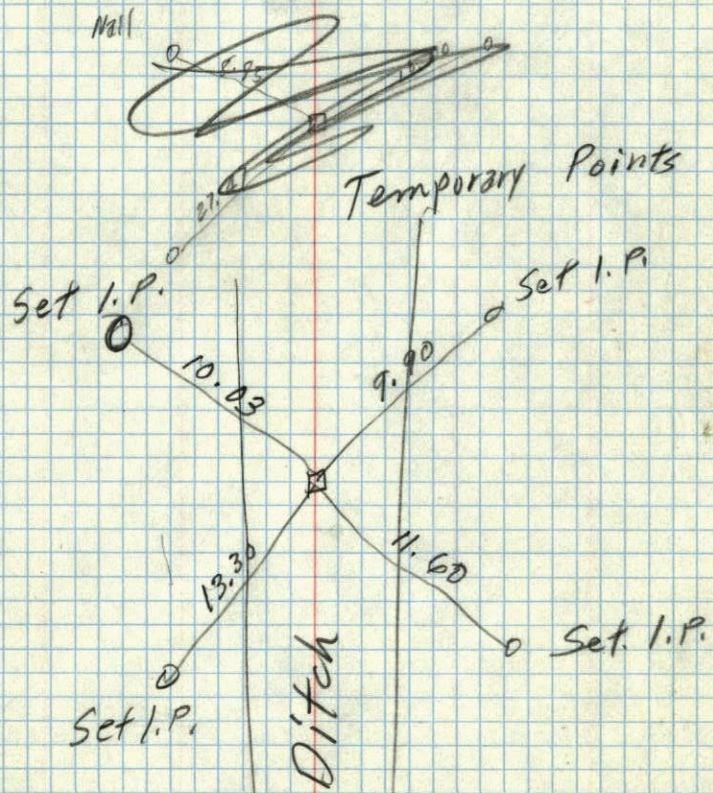
N.W. COR. SEC. 28, T. 32, R. 23

6"x6" Granite Monument in
Center of DitchTEMPERATURE CORRECTED
AND HORIZONTALLY
TAPED MEASUREMENTSROLAND W. ANDERSON
COUNTY SURVEYOR
ANOKA COUNTY, MINNESOTA6 Feb 1961
Freeman, Anderson
+ 20° Temp. Corr.NW Cor Sec 28-32-23 (Ham Lake)
Found Granite Mon & Drainage Ditch

NW Corn. Sec. 28, T32, R23

R. Anderson
B. Rogers

Replaced Granite that
was taken out by contractor
Digging the ditch.



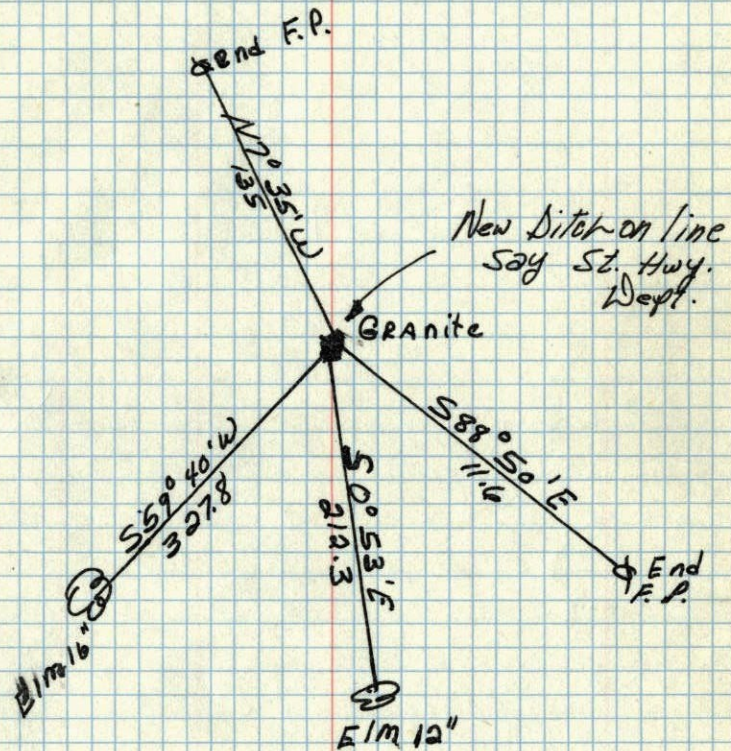
NW

28

30

NE Corner of Sec. 29 T. 32 R. 23

Granite on E. + W fence line + Farm road



Jan. 12, 1945
C. A. Wright